



# RESOURCE RISK MANAGEMENT

**Telecommunications and Technology Intellectual Services**

**"SUSTAINING CORPORATE INFRASTRUCTURE AND RESOURCES"**

*ASSET & INVESTMENT RISK   BUSINESS RISK   FIRE & LIFE SAFETY   PROJECT LEADERSHIP*





## RESOURCE RISK MANAGEMENT

Resource Risk Management is an independent global risk management consulting group. Our vision is to “sustain corporate infrastructure and resources” in accordance with the strategic objectives of our clients.

RRM has extensive expertise in telecommunications and technology risk management, having successfully completed critical acquisition, business risk, fire and life safety and infrastructure project deliveries.

RRM's project portfolio in this market segment includes, facilitation of private/corporate equity acquisitions, risk based capital allocation models for key business processes, business continuity studies, management of life cycle replacement of key BES and infrastructure, fire and life safety risk analysis and data centre construction.

### WHY RRM?

Our objective is to apply our intellectual services to deliver market strategies, financial solutions, engineered systems, procedures and products to: create value, maintain business continuity, safe guard life and property, and sustain commercial and market position.

To do this RRM consistently applies three basic approaches to all projects, these being:

**PRACTICAL APPROACH;** our risk managers and engineers deliver a unique blend of experience, skill, and expertise in their respective fields. RRM ensures that all approaches to work rendered to clients are holistic in nature, incorporating innovation, practical experience and findings to develop a realistic and reliable result.

Our personnel are a diverse team of experts trained all over the globe (Hong Kong, US, Europe, China and Australia), enhancing RRM's depth of innovation and ability provide an excellence in delivery based upon broad ranging capabilities.

**PROCESS INTEGRITY;** the processes and compliance systems used by RRM are highly respected by our clients as providing them with professional excellence, technical and financial integrity, and a strong sense of ethics. In all recommendations and actions RRM seeks to demonstrate compliance to both our clients and stakeholders in the delivery of our intellectual services.

**PERSONALISED CONSULTING;** to meet the continuing needs of our clients and to tailor the intellectual services we provide to achieve outstanding performance in sustaining corporate infrastructure and resources. **Trust that RRM will deliver what we promise to deliver.**

**“SUSTAINING CORPORATE INFRASTRUCTURE AND RESOURCES”**

ASSET & INVESTMENT RISK   BUSINESS RISK   FIRE & LIFE SAFETY   PROJECT LEADERSHIP





## RRM's INTELLECTUAL SERVICES

The success of RRM's intellectual services approach has been to focus our specialities to meet the specific project needs of our clients. To best facilitate this, we have structured our practice into our four major strengths of risk management:

### Asset and Investment Risk Management

- ❖ Operational/ project due diligence
- ❖ Commercial/ market due diligence
- ❖ Business Valuation
- ❖ Third Party acquisition representation

### Business Risk Management

- ❖ Business continuity planning
- ❖ Disaster recovery
- ❖ Process risk analysis

### Fire and Life Safety Risk Management

- ❖ Fire product research and specification
- ❖ Life cycle upgrade/compliance, feasibility and conceptual reporting
- ❖ Design, specification and tender management
- ❖ Product research and selection
- ❖ Design audits and certification
- ❖ Performance audits
- ❖ Preparation of fire safety schedules, annual fire safety statements
- ❖ Maintenance schedule development
- ❖ Building Code of Australia compliance audit and advice

### Project Leadership Risk Management

- ❖ Establishing project objectives and structure
- ❖ Project planning, compliance, safety and security
- ❖ Project program management
- ❖ Project cost and financial management
- ❖ Project and process management
- ❖ RFT Preparation for design and construction works
- ❖ Project construction management

**"SUSTAINING CORPORATE INFRASTRUCTURE AND RESOURCES"**

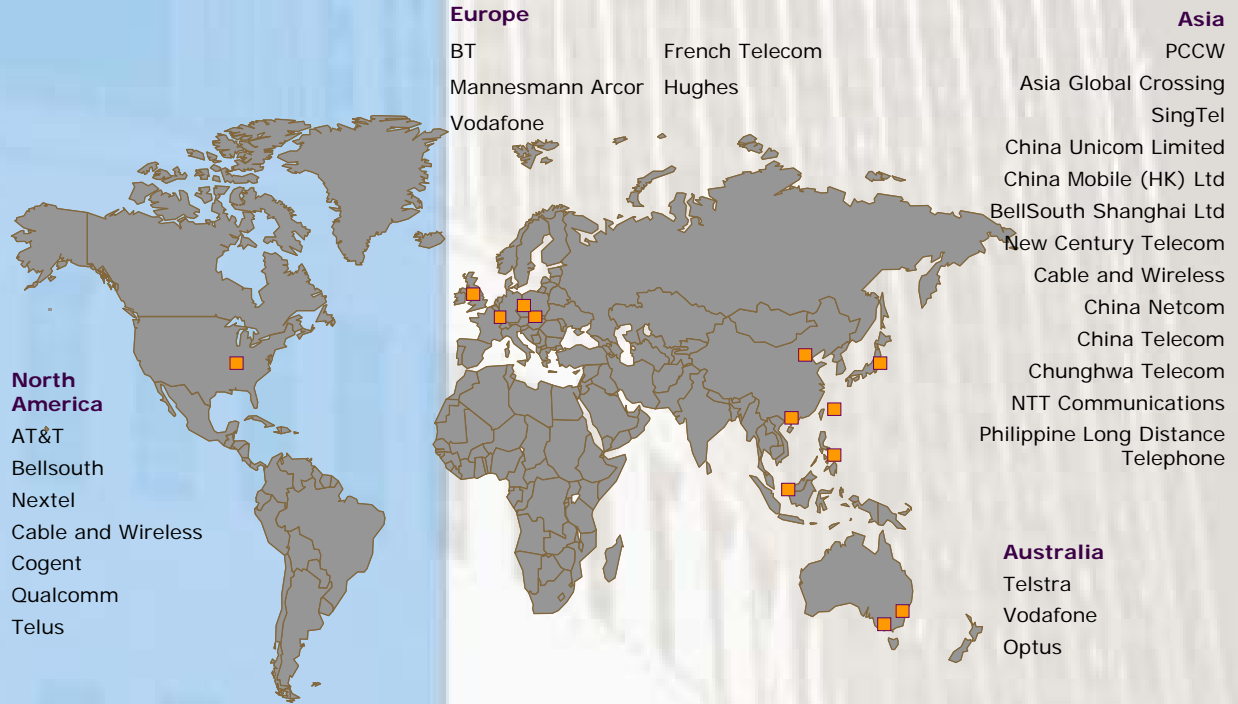
*ASSET & INVESTMENT RISK    BUSINESS RISK    FIRE & LIFE SAFETY    PROJECT LEADERSHIP*





## RRM TELECOMMUNICATIONS CLIENT PORTFOLIO

RRM has delivered risk management services to the telecommunications industry world wide having managed projects for the leading telecommunications and technology companies globally. Several of our major clients include:



## RRM PROJECT PORTFOLIO

A selection of telecommunications and technology projects completed by RRM is provided as follows:

### Asset and Investment Risk

Project	Description	Project Value
Business Case analysis of several building infrastructure options for network expansion.	Development of an investment model for the construction of a new building to accommodate power and infrastructure services.	\$25m
Acquisition of an emerging VOIP technology company to provide presence and entry into this product segment.	RRM undertook identification, commercial due diligence, valuation and negotiations on behalf of our Chinese venture capital client.	\$45m

## "SUSTAINING CORPORATE INFRASTRUCTURE AND RESOURCES"



<b>Business Risk</b>		
<b>Project</b>	<b>Description</b>	<b>Project Value</b>
Business and OH&S risk assessment of critical Rail signal control facilities.	Audit and risk mitigation report for power control room. Identify threats and treatments to meet OH&S duty of care responsibilities.	\$60m
Undertake a network threat risk assessment of 32 strategic telephone exchange facilities.	Identification of threats application of RRM's Fire Safety Model to determine risk reduction levels for various initiatives and then program upgrade to meet duty of care responsibilities for life safety.	\$200k (audit cost)
SCTN Business Continuity study.	Application of RRM's Capital allocation model to identify threats, undertake risk analysis and evaluation and recommend treatment.	\$1.5b

<b>Fire and Life Safety Risk</b>		
<b>Project</b>	<b>Description</b>	<b>Project Value</b>
Egress study of a major telephone exchange facility.	Undertake egress modelling of an unmanned exchange, recommend performance based life safety upgrades.	\$300k
Survey and audit of 25 building facilities for compliance to the BCA.	National fire safety audit for BCA compliance of TE's. Provide performance based recommendations on fire safety upgrade and prioritise base on network integrity and life safety risk reduction.	\$80m
Broadway Telephone Exchange Sprinkler Risk Evaluation	Audit of fire safety upgrade works in progress and priority assessment for staging completion across two budget periods.	\$40k

<b>Project Leadership Risk</b>		
<b>Project</b>	<b>Description</b>	<b>Project Value</b>
Building Engineering Services, Growth & Lifecycle equipment replacement.	Preparation of Multiple RFT's, equipment procurement, contractor selection, evaluation and award, client reporting, POW, feasibility and design management of 160 separate projects in multiple geographic locations across two years.	\$85m
Under Ground infrastructure distribution network, structural remedial works.	Preparation of Multiple RFT's, speciality equipment procurement, contractor selection, evaluation and award, client reporting and cash management and construction mgt.	\$1.5m

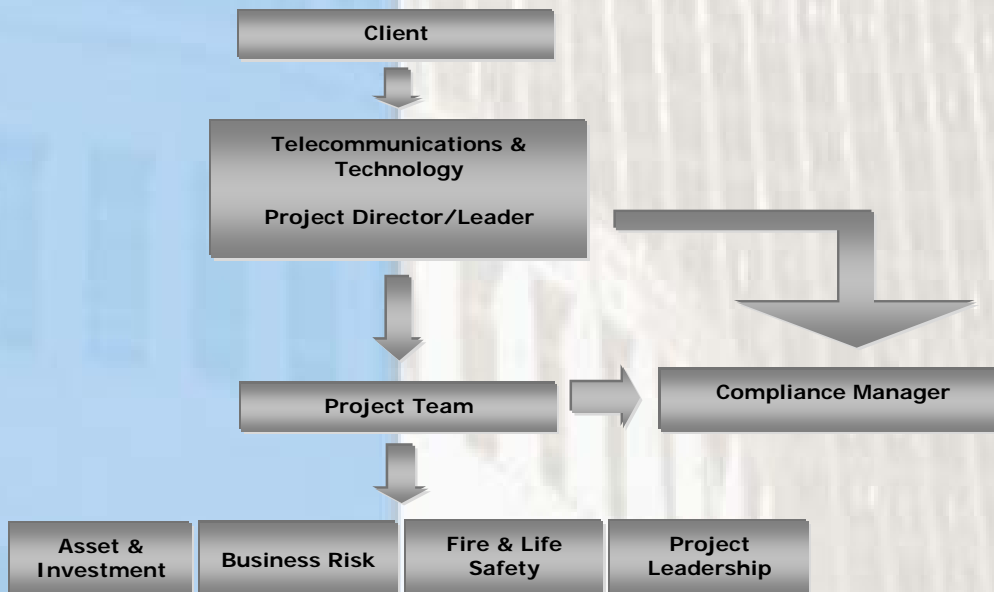
**"SUSTAINING CORPORATE INFRASTRUCTURE AND RESOURCES"**



## DELIVERY STRUCTURE

RRM's intellectual service delivery is based on key client communication to ensure that the client team is kept fully informed of progress, issues, impacts and duty of care discoveries as per the dictates of the RRM compliance procedure which mandates the compilation and retention of various levels of formal documentation and evidence to support all recommendations and actions.

This responsibility is exercised through a formal project and reporting structure that can be represented generally as follows:



RRM operates central offices in each major region of participation to support our intellectual services. Central office locations are:

### Australia:

Level 3, 1 Booth Street  
Annandale Sydney  
Australia NSW 2038  
Telephone: + 61 2 9571 7551  
Facsimile: +61 2 9571 7881  
Email: [rrmaust@rrm.com.au](mailto:rrmaust@rrm.com.au)  
[www.rrm.com.au](http://www.rrm.com.au)

### Asia:

Unit 2, 11/F  
148 Electric Road  
Northpoint Hong Kong  
Telephone: + 852 2590 0882  
Facsimile: + 852 2590 0833  
Email: [general@rrm.com.hk](mailto:general@rrm.com.hk)  
[www.rrm.com.hk](http://www.rrm.com.hk)

### Europe:

Lussiweg 8  
Zug 6300  
Switzerland  
Telephone: + 417 6315 6044  
Facsimile: + 417 6315 6088  
Email: [general@rrm.co.uk](mailto:general@rrm.co.uk)  
[www.rrm.com.au](http://www.rrm.com.au)